

20' Offshore Container 20'x8'x8'6" Open Side

DNV/ISO Corner Castings
Corrugated Panel

DNV Certification Note 2.7-1:
Offshore Containers

BS EN 12079: Offshore Containers
In support of IMO MSC/Circ. 860
ISO/TC 104

The Customs convention on
Container CCC/TIR
The Convention for
Safety Containers CSC

Classification Society: Bureau Veritas
Classification by Det Norske Veritas available by Special Order

Mobilization Packet :

Original Certificates and Full Data Book

DNV/ISO Corner Casting
Stackable Container

Allows for any intermodal
means of transportation

Handling Options: Forklift, Crane or Top Lift

Options

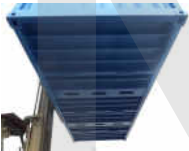
DNV Certified IWRC

Wire Rope Lifting Sling

Equipped with Safety Pin Bow Shackles
& Flemish Steel Splice Terminations

DNV 2.7 -1 / EN13414 / ASME B30.9

Uniquely numbered, tagged & certified



Dimensions

20' (L) x 8' (W) x 8'6" (H)

External	Internal	Capacity
6058 mm (20')	5893 mm (19'4")	28.8 Cu.m (1017 Cu. ft)
2438 mm (8'0")	2270 mm (7'5")	
2591 mm (8'6")	2153 mm (7' 3/4")	

End Door Opening: 2,114 mm(W) x 2128 mm(H)

Side Door Opening: 5,702 mm(W) x 2,053 mm(H)

Ratings

As ISO

As Offshore

24,000 kg	52,910 lb	Max Gross	35,270 lb	16,000 kg
19,300 kg	42,550 lb	Payload	26,910 lb	11,300 kg
4,700 kg	10,360 lb	Tare (+/- 2%)	10,360 lb	4,700 kg



FIRST CHOICE FOR SPECIALIST DNV CABINS,
SPECIALIST MODULES, CONTAINERS AND BASKETS